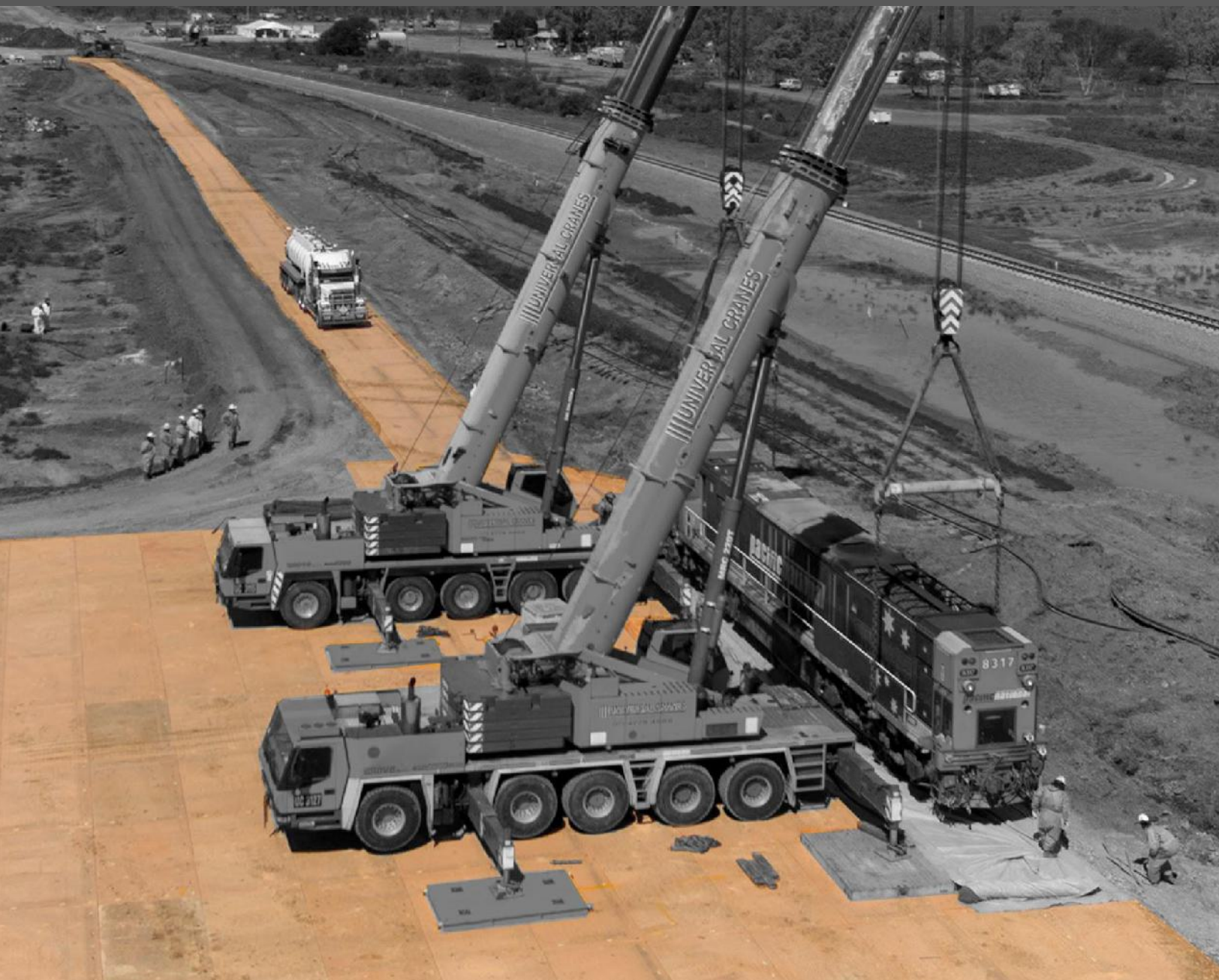


# RAIL PROJECTS

## CAPABILITY STATEMENT

DEVELOPMENT | REPAIR | UPGRADES | EMERGENCY RESPONSE





Temporary crane support for rail bridge replacement works  
Archerfield, QLD.

# INTRODUCTION

---



***The Australian rail network spans over 41,000km and continues to expand. We provide the way for rail project teams to build temporary roads and work platforms sustainably.***

JWA help rail operators and construction crew keep on schedule and budget with our experience in overcoming ground issues while supporting best practises in environmental and work safety policies.

New rail projects, railway upgrades, and track repairs can face terrain challenges such as problematic soils, environmental restrictions and exposure to rain events. New station builds and works in urban areas may need to protect surrounding, and buried infrastructure and redirect pedestrian traffic.

Our range of composite matting solutions have been tried and tested on major Australian infrastructure and construction projects. Whether it is gaining urgent access for heavy recovery and repair equipment, protecting pavements and underground services, minimising earthworks around conservation areas, or responding to 1 in 100 year rain events, we have a successful track record since starting in 2003.

From man-portable pedestrian walkways to Australia's toughest composite mat, Dura-Base®, our expert team will advise the right solution for your scope of works.



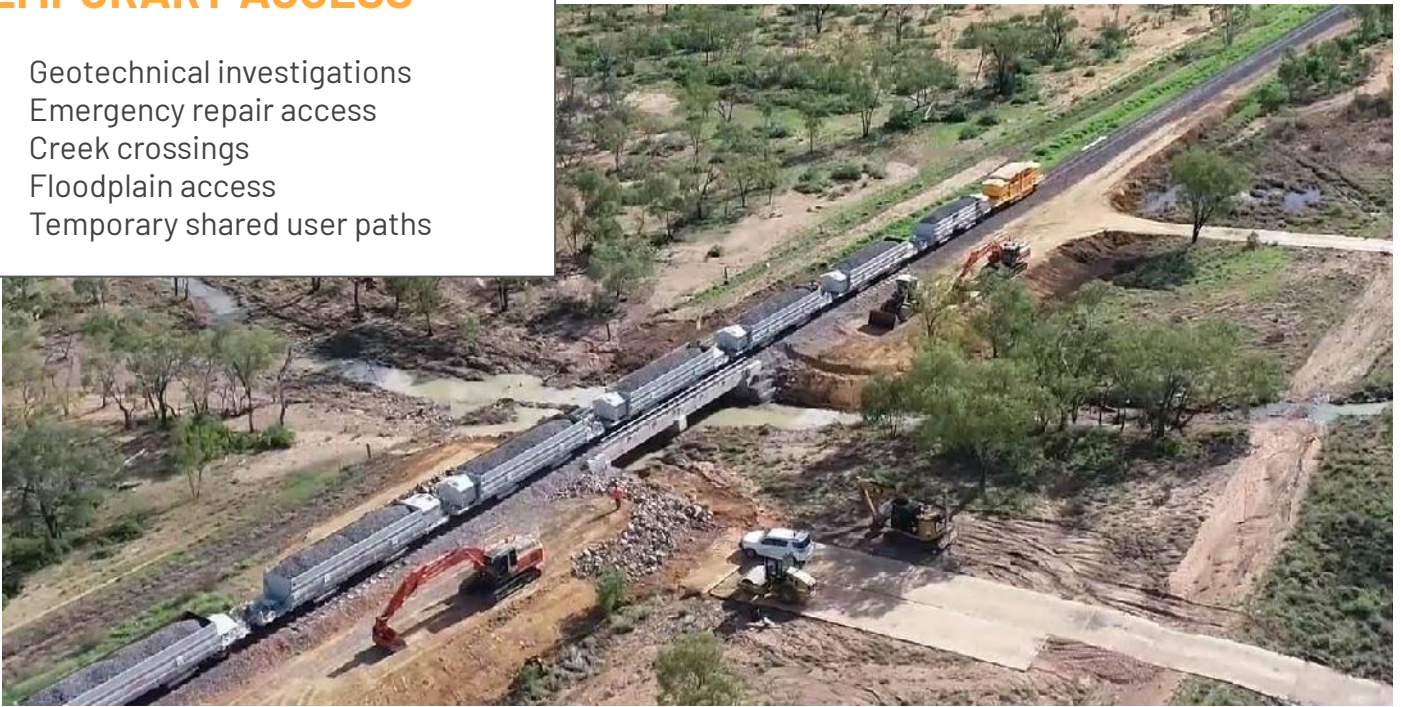
# OUR SOLUTIONS

At JWA, we are with you at every step of the way. No matter what kind of access you need - for geotechnical studies, level crossings replacement, or repair of storm-damaged tracks.

We take pride in assisting project engineers and construction crews to meet or beat their delivery timelines while minimising their environmental impact and disruption to stakeholders.

## TEMPORARY ACCESS

- Geotechnical investigations
- Emergency repair access
- Creek crossings
- Floodplain access
- Temporary shared user paths



## STABILISED PLATFORMS

- Piling pads
- Crane lifting platforms
- Temporary compounds
- Heavy haul road
- Temporary car parks



# OUR SOLUTIONS

## EROSION & SEDIMENT CONTROL

- Construction vehicle track-out control
- Keep soil and spoil contained on site
- Stabilised site exits
- Replacement of aggregates and imported fill material



## GROUND PROTECTION

- Working in Class A nature reserves, cultural heritage sites, environmental wetlands
- Mitigate soil contamination
- Hardscape protection
- Protection of underground pipelines and buried services



# OUR PRODUCTS

## Dura-Base® Composite Matting System

4.27m x 2.44m x 105mm, 454kg

Interlocks to give **maximum stability** for heavy equipment in soft grounds.  
**Maximum protection** to prevent track ruts on environmentally sensitive sites.  
**Reusable** over multiple sites saving on transport and imported fill.



## FODS Track-Out Control Matting

3.66m x 2.13m x 95mm, 191kg

**Reusable rumble mats** to keep debris within site exits.  
Installs on most surfaces with **no digging required**.  
**Tough on mud, gentle on tyres.**



# OUR PRODUCTS

## Pro-Zone Composite Mats

1.0m x 1.0m x 75mm, 23kg

Interlocking man-portable mats for a flushed surface suitable for **footpaths and wheelchair access**. Near-instant walkways and workshop floors on grass, sand, and soft grounds **with little or no ground preparation**.



## Pro-Tech Ground Protection Mats

**Pro-Tech SD** - 2.0m x 1.0m x 12mm, 27kg

**Lighter, faster, and more compact.**  
1.2cm thickness for proven durability.  
Designed for the Australian climate.

**Pro-Tech HD** - 2.4m x 1.2m x 14mm, 43kg

**Heavier duty yet still man-portable.**  
For jobs with softer ground and larger machinery.  
Designed for the Australian climate.



# CASE STUDIES

## Mt Isa Rail Line Flood Response 2019

Location : Julia Creek & Nelia, QLD

Client : Queensland Rail

Coverage : 11,800 m<sup>2</sup>

Contract Value : \$980K

Scope :

- Heavy vehicle access across creeks and floodplains
- Temporary site compound
- Dual-crane lift platform

JWA provided heavy-duty matting for emergency crews to access flood affected sites and carry out inspection, repair and recovery operations with minimal impact to the environment.

### Challenges:

- Continual rain.
- Minimising downtime of Mt Isa Rail Line.
- Recovery of 100t rail carriage.

### Benefits of Composite Matting:

- Rapid roadway and pad construction with minimal ground disturbance.
- Weatherproofed site for uninterrupted site access.
- Minimal remediation required.
- Safely completed in 11 weeks, under the initial estimates of over 6 months.





# CASE STUDIES

## Level Crossing Removal Project - FODS Rumble Mats

Location : Multiple sites, VIC

Clients : Multiple JVs

Coverage : 10+ construction entrances

Contract Value : \$80K (total value of converted sales and rentals)

Scope :

- Construction site exit/entrance vehicular track-out control

The Level Crossing Removal Project was one of the first Victoria Big Build Projects to trial FODS as a track-out control alternative to traditional methods such as rock pads and rumble grids. FODS Rumble Mats quickly proved to be an effective solution in tight, urban environments – offering fast installation and reliable performance in locations where excavation wasn't an option.

Originally purchased for single scopes, the mats were reused across other JV-led worksites – delivering excellent return on investment through repeat use.

### Challenges:

- Tight access points not suited for rock pads.
- Buried services and concrete surfaces made excavation impractical.
- High spoil volumes from excavation and construction works.

### Benefits of FODS track-out mats:

- Installed in minutes without digging or site disruption.
- Easy to clean between vehicle movements – no site shutdowns required.
- Reused across scopes and egress points, saving time and money.
- Helped reduce debris on roads and cut down on street sweeper runs.



# CASE STUDIES

## Level Crossing Removal Project - Frankston Line

Location : Frankston, VIC

Client : North West Program Alliance

Coverage : 3,100 m<sup>2</sup>

Contract Value : \$250K

Scope :

- Temporary crane pad
- Temporary piling platform
- Road surface protection
- Protection of buried services

JWA supported the construction of Skye-Overton Rd rail bridge and the new Frankston station as part of the Level Crossing Removal Project.

### Challenges:

- Heavy traffic at level crossing intersection.
- Underground pipes and services.

### Benefits of Composite Matting:

- Protection of underground services by spreading the point load of the crossing vehicles.
- Same mats reused over multiple locations and applications.
- Reduced truck movements - 420 m<sup>2</sup> coverage per semi-trailer.
- Significant reduction in remediation time and costs compared to aggregate.
- Matting easily removable to allow resumption of traffic at night.



# CASE STUDIES

## Mt Isa Rail Line Flood Response 2020

Location : Prairie Creek, QLD

Client : Queensland Rail

Coverage : 6,700 m<sup>2</sup>

Contract Value : \$430K

Scope :

- Heavy vehicle access for the replacement of track and ballast, bridge approach repairs, and bridge and earthworks repairs
- Temporary site compound

JWA provided heavy-duty matting for emergency crews to access flood affected sites and carry out inspection, repair and recovery operations with minimal impact to the environment.

### Challenges:

- Continual rain.
- Minimising downtime of Mt Isa Rail Line.

### Benefits of Composite Matting:

- Rapid roadway and pad construction with minimal ground disturbance.
- Weatherproofed site for uninterrupted site access.
- Minimal remediation required.
- Safely completed in 2 weeks, under the initial estimates of 3 weeks.



# CASE STUDIES

## Mount Isa Line Repair Post-Cyclone Kirrily

Location : Gilliat, QLD

Client : Queensland Rail

Coverage : 7,800 m<sup>2</sup>

Contract Value : \$1.46M

Scope:

- Access track along the damaged rail line
- Rapid emergency response
- Access to flood affected areas
- Wildlife protection

Ex-Tropical Cyclone Kirilli caused excessive damage to the Mount Isa line. Weeks after the main weather event, water levels remained quite high, with some of the flooded areas staying above the one-meter mark and rising further after consistent thunderstorms in the area.

### Challenges:

- Rapid access to the flood-affected areas was required.
- The train line remained closed for emergency response works.
- Site vehicles required traversing kilometres of flooded zones.
- Bringing rock would have caused a lot of environmental issues and potentially polluted existing waterways.
- Adverse weather conditions compromised soil stability.

### Benefits of Composite Matting:

- Rapid access to damaged tracks, enabling swift repairs.
- Protection of waterways from pollution and environmental damage.
- Safe crossing of flood zones for site vehicles.
- Accelerated reopening of the Mount Isa line, exceeding QR's anticipated timeline.



# SUSTAINABLE PRACTICES

At JWA, sustainability is a core priority that guides our operations. We embody the **Reduce, Reuse, Recycle** principles in everything we do. In our daily operations, we:

- Wash our mats after every job to maintain their pristine condition.
- Inspect and service our fleet after every job, which has enabled us to extend the lifespan of our mats by 5 years or more, from the manufacturer's stated 15 years to 20 years.



## RECYCLING AND "END OF LIFE" PROGRAM

Our mats are 100% recyclable. When they reach the end of their life we clean them extensively to remove debris and other material that may contaminate the process, portion the mats small into pieces so that they can be accommodated by the recycling plant and then send them to a local plastics recycling centre.

We also introduced the "End Of Life" program for our clients who own their fleet and require assistance in responsible disposal of the mats that are no longer fit for purpose.

## AUSTRALIAN MADE RECASTED PINS

Locking pins are vital for Dura-Base® installations as they prevent mat displacement.

As part of the "Pins Recasting" program, we remove the old, deteriorated plastic to salvage the steel shaft. We've collaborated closely with a local manufacturer to design pin molds and develop an improved quality resin mixture.

This program allows us to conserve valuable steel resources, while supporting Australian manufacturers and providing our customers with high quality locking pins.



# SUSTAINABLE PRACTICES

We strive for continuous improvement of our facilities and embrace innovative, sustainable approaches. In our operations, we strictly adhere to the guidelines outlined in our sustainability policy and aim to exceed the required standards.



## WATER TREATMENT

We recently overhauled our water treatment system at our headquarters, installing a PR Water unit to manage substantial volumes of contaminated water. The system uses flocculant chemicals to quickly sediment deposits. Through our collaboration with PR Water, we conducted tests to determine optimal chemical compositions for treating water from our bog mats, which return with diverse soil deposits. We took multiple water samples to a NATA Accredited Lab to ensure compliance with UnityWater discharge requirements.

## POWERED BY RENEWABLE ENERGY

As part of our commitment to reducing the environmental footprint of our operations, we've almost fully transitioned our Brisbane facility to sustainable energy, harnessing Queensland's abundant sunshine. Our 80 solar panels (36kW), installed in 2021, has generated more than 50 MWh annually, reducing our grid consumption by two-thirds and supplying triple the amount of renewable energy back to the grid. Additionally, we utilise a battery unit to power our office appliances during night hours and have implemented various energy efficiency actions.



## Other sustainable actions:

- We have conducted carbon accounting over the past 3 years, including calculating our scope 3 emissions, and are nearing our net zero goal for scope 1 and 2.
- We performed a yard audit for energy efficiency and implemented all recommended changes.
- We enhanced our sustainability policy to address work-related travel, ensuring all emissions from business travel are fully offset.
- We electrified operations where possible, including:
  - Switching to electric-powered high-pressure washers.
  - Using electric tools for servicing and mat repairs.
- We have introduced energy-saving measures, such as:
  - LED lighting replacements and motion sensor installations.
  - Building insulation upgrades for improved climate control and reduced energy consumption.
- We utilise a 30,000L rainwater tank for mat washing.
- We recycle and repurpose materials like steel and wood pallets, with our team creatively minimising waste by:
  - Building furniture from palletised wood.
  - Creating garden beds and veggie patches.
- We maintain a permaculture garden on our premises, growing fruit and vegetables for team's use.

# ABOUT US

---

Established in 2003, JWA is wholly Australian-owned and operated, supplying projects nationwide from our purpose-built facility in Brisbane.

With beginnings in supporting oil and gas exploration projects, our specialised experience in providing temporary access, ground support and work platform solutions now assist infrastructure and construction projects all over Australia.

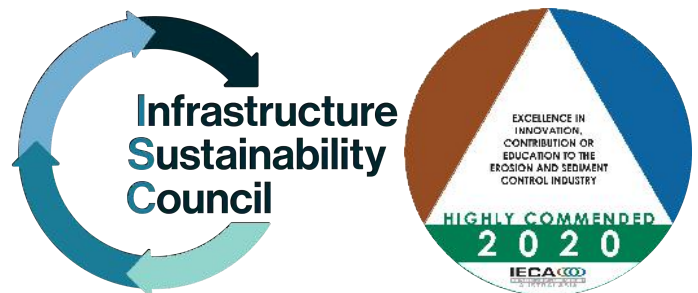
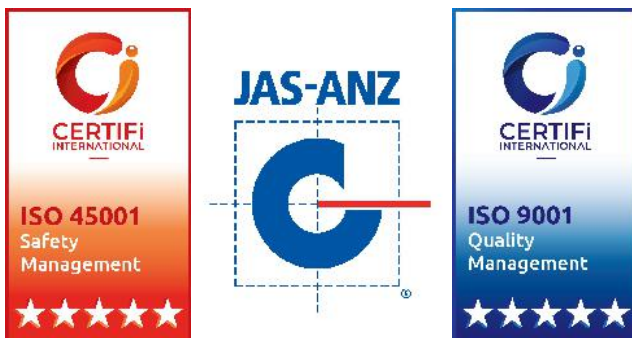
As the exclusive distributor of Dura-Base® Composite Matting for the Asia-Pacific region, we have over 170,000 m<sup>2</sup> deployed and over 50,000 m<sup>2</sup> available in Australia alone.

We are proud members of the Infrastructure Sustainability Council, and the International Erosion Control Association Australasia.

Our FODS Track-Out Control Matting received the Highly Commended Award in the 2020 IECA Australasia Environmental Excellence Awards, under the category of Excellence in Innovation, Contribution or Education to the Erosion and Sediment Control Industry.

Our products are part of ISC's iSupply directory and may contribute to projects aiming to fulfill credits in IS v1.2 Dis-4, IC-8, Mat-1, Was-1 & Was-2, and IS v2.1 Env-4, Inn-1, Rso-3, Rso-4, Rso-6.

**JWA Composite Matting**  
**ABN : 91 106 986 216**



# OUR STANDARDS

## Safety, Environment, and Quality Management Systems

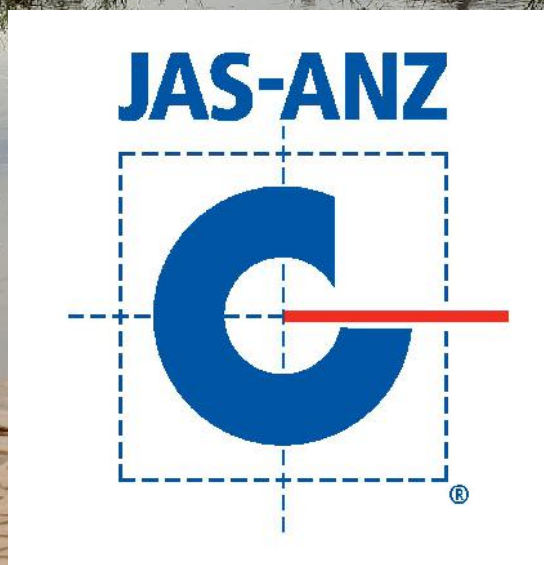
At JWA, safety, environmental responsibility, and quality are fundamental to how we operate. Guided by our **Health, Safety, Environment & Quality (HSEQ) Policy**, we are committed to eliminating hazards, minimising risks, and ensuring the well-being of all personnel while delivering solutions that exceed client expectations.

We take pride in having our operations certified to **ISO 45001:2018 (Occupational Health and Safety Management Systems)** and our facilities and business processes certified to **ISO 9001:2015 (Quality Management Systems)**. These certifications demonstrate our commitment to compliance, continuous improvement, and industry-leading standards.

Our team has a proven track record of delivering projects on highly regulated sites, maintaining strong controls around safety, quality, and environmental protection. Through our **Integrated HSEQ management system**, we aim to:

- Protect people and the environment by preventing harm, reducing waste, and using resources responsibly.
- Maximise efficiency by improving energy performance and minimising environmental impacts.
- Ensure compliance with all legal and regulatory obligations.
- Engage and support personnel through training, consultation, and feedback opportunities.
- Continuously improve our systems and performance through review, innovation, and collaboration with stakeholders.

This approach ensures that JWA consistently delivers safe, reliable, and sustainable solutions for our clients and communities.



# OUR CLIENTS

---



# CONTACT US

---

## Our friendly team are here to help

Chat to us about your project scope today and find how our solutions can be applied to reduce the impact of the project on the environment while successfully meeting deadlines.

### JWA Composite Matting

#### Head Office and Depot

35 Griffin Crescent  
Brendale QLD 4500

P: 1800 264 628  
1800 BOG MAT

E: [enquiries@jwamats.com.au](mailto:enquiries@jwamats.com.au)

W: [www.jwamats.com.au](http://www.jwamats.com.au)



Follow us on  
LinkedIn, to stay  
tuned for the  
updates

With an extensive network of transport operators and suppliers, we provide **nationwide coverage** across Australia and Oceania, delivering mats to our customers wherever they are.



# NOTES



***When you need to find a way***

1800 264 628 | 1800 BOG MAT

[www.jwamats.com.au](http://www.jwamats.com.au)