

ROAD PROJECTS

CAPABILITY STATEMENT

DEVELOPMENT | REPAIR | UPGRADES | EMERGENCY RESPONSE





INTRODUCTION



Australia is connected by an extensive road network over 817,000km long. We support teams expanding this vital infrastructure with sustainable temporary roads and work platforms.

JWA is the premier supplier of heavy-duty composite mats within Australia. With over two decades of experience supplying the Dura-Base® interlocking mat system to projects across Australia, we help developers and engineers keep on schedule and budget in overcoming ground issues while supporting best practises in environmental and work safety policies.

Highway duplications, tunnel excavations, motorway expansions and road upgrades have to face challenges such as high vehicle and pedestrian traffic, underground infrastructures, tight workspaces and inclement weather, while under high public scrutiny.

Our range of composite matting solutions have been tried and tested on major Australian projects. Whether it is for urgent ground stabilisation, reusable piling pads, minimising earthworks and dust, or responding to 1 in 100 year rain events, we have a successful track record since starting in 2003.

From man-portable hardscape protection to Australia's toughest composite mat, Dura-Base®, our expert team will advise the right solution for your scope of works.



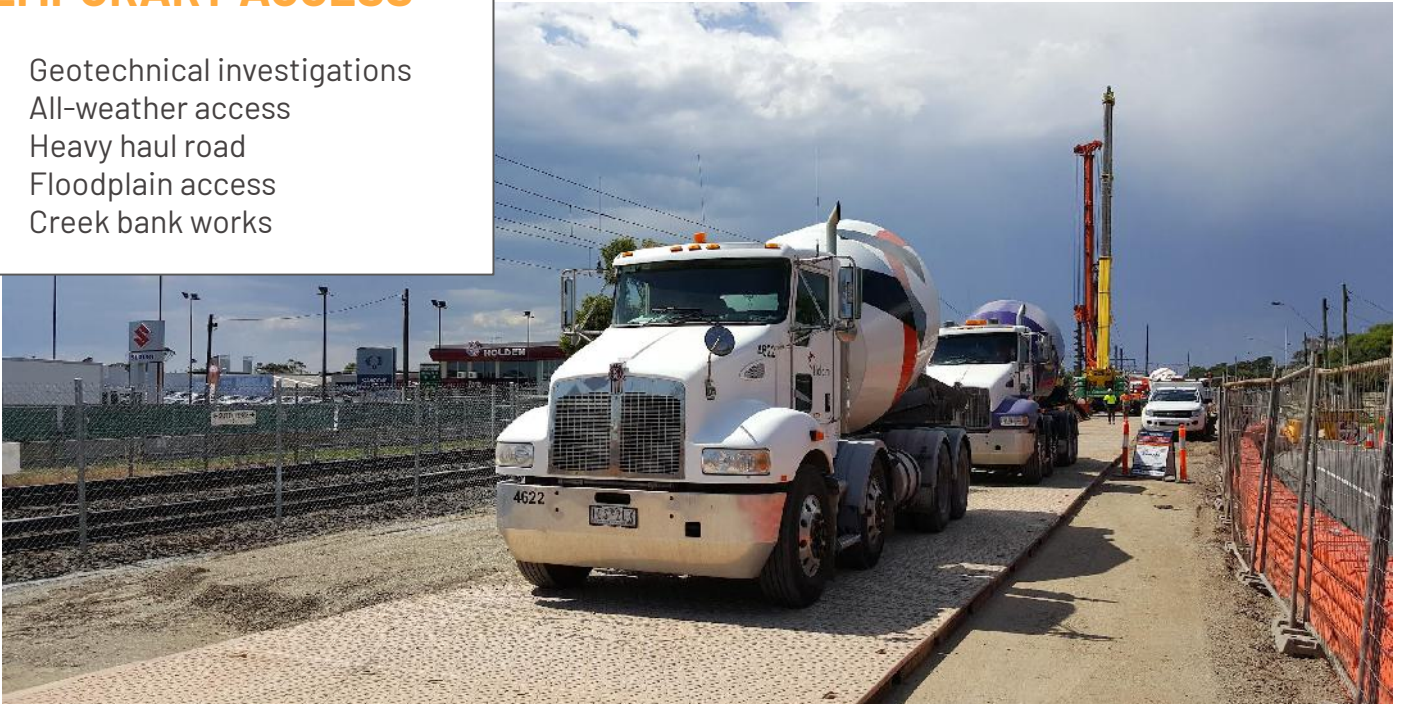
OUR SOLUTIONS

At JWA, we are with you at every step of the way, whether it's support for cut and cover programmes, removable platforms for night works, or responding to inclement weather.

We take pride in assisting project teams to meet or beat their delivery timelines while adopting sustainable practices of reusability and minimising environmental impact.

TEMPORARY ACCESS

- Geotechnical investigations
- All-weather access
- Heavy haul road
- Floodplain access
- Creek bank works



STABILISED PLATFORMS

- Piling pads
- Crane lifting platforms
- Temporary compounds
- Temporary hardstand
- Temporary car parks
- Temporary laydown yard



OUR SOLUTIONS

EROSION & SEDIMENT CONTROL

- Construction vehicle track-out control
- Keep soil and spoil contained on site
- Stabilised site exits
- Replacement of aggregates and imported fill material



GROUND PROTECTION

- Hardscape protection (concrete and asphalt)
- Protection of underground pipelines and buried services
- Working in Class A nature reserves, cultural heritage sites, environmental wetlands
- Mitigate soil contamination



OUR PRODUCTS

Dura-Base® Composite Matting System

4.27m x 2.44m x 105mm, 454kg

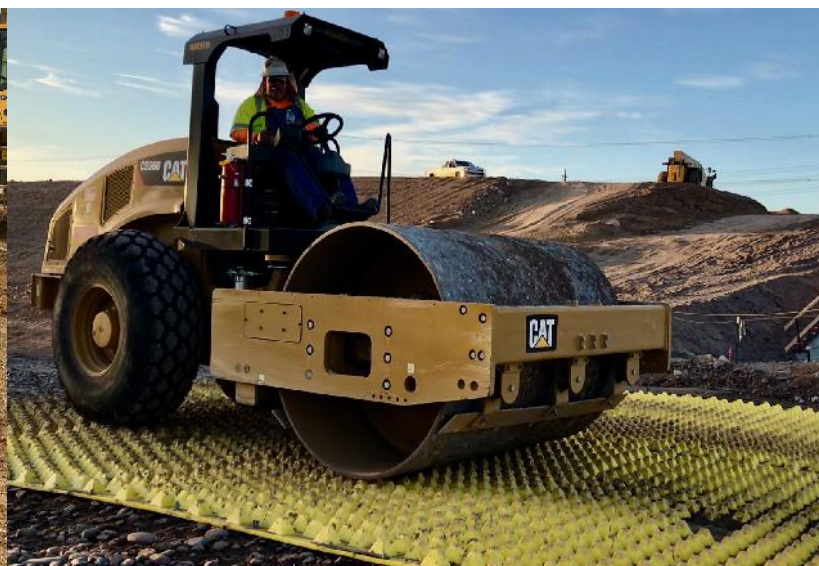
Interlocks to give **maximum stability** for heavy equipment in soft grounds.
Maximum protection to prevent track ruts on environmentally sensitive sites.
Reusable over multiple sites saving on transport and imported fill.



FODS Track-Out Control Matting

3.66m x 2.13m x 95mm, 191kg

Reusable rumble mats to keep debris within site exits.
Installs on most surfaces with **no digging required**.
Tough on mud, gentle on tyres.



OUR PRODUCTS

Pro-Zone Composite Mats

1.0m x 1.0m x 75mm, 23kg

Interlocking man-portable mats for a flushed surface suitable for **footpaths and wheelchair access**. Near-instant walkways and workshop floors on grass, sand, and soft grounds **with little or no ground preparation**.



Pro-Tech Ground Protection Mats

Pro-Tech SD - 2.0m x 1.0m x 12mm, 27kg

Lighter, faster, and more compact.
1.2cm thickness for proven durability.
Designed for the Australian climate.

Pro-Tech HD - 2.4m x 1.2m x 14mm, 43kg

Heavier duty yet still man-portable.
For jobs with softer ground and larger machinery.
Designed for the Australian climate.



CASE STUDIES

WESTCONNEX New M5

Location : Kingsgrove, NSW

Client : CPB Contractors

Coverage : 2,500 m²

Contract Value : \$100K

Scope :

- Heavy dump truck haul road
- Platform to support beam installation
- Dust suppression

JWA provided heavy-duty matting to support cut and covers works for the twin motorway tunnels between Kingsgrove and St Peters interchange.

Challenges:

- Presence of harmful crystalline silica.
- Inclement weather.
- Heavy dump truck traffic.

Benefits of Composite Matting:

- Dust suppressing roadway - minimised risk of releasing silica dust.
- Weatherproofed site for uninterrupted site access.
- Easy to clean and decontaminate.
- Rapid install.





CASE STUDIES

FODS Victorian Trials

Location : Multiple sites, VIC

Clients : RIA, CYP, CPBJH JV

Coverage : 4 construction entrances

Contract Value : \$60K (total value of converted sales and rentals at the end of trial period)

Scope :

- Construction site exit/entrance vehicular track-out control

JWA conducted a series of trials to assess the suitability of the FODS track-out mats for Australian construction sites.

Challenges:

- Selected sites are projects in progress with existing rockpads or rumble grids with minimal space available for installation.
- Concrete surfaces, confined spaces, busy site egress locations.
- High volume of spoil resulting from tunnel excavation works.

Benefits of FODS track-out mats:

- Quick to install.
- Surface mountable on surfaces include concrete and asphalt - no digging or trenching required.
- Reusable.
- 100% recyclable at end of 10 year lifecycle.
- Easy to clean.
- One site approximated a 40% reduction in sweeper runs required compared to the previous track-out system.
- Recognition by ISC, and by IECA as an Australian First.





CASE STUDIES

Level Crossing Removal Project - Frankston Line

Location : Frankston, VIC

Client : North West Program Alliance

Coverage : 3,100 m²

Contract Value : \$250K

Scope :

- Temporary crane pad
- Temporary piling platform
- Road surface protection
- Protection of buried services

JWA supported the construction of Skye-Overton Rd rail bridge and the new Frankston station as part of the Level Crossing Removal Project.

Challenges:

- Heavy traffic at level crossing intersection.
- Underground pipes and services.

Benefits of Composite Matting:

- Protection of underground services by spreading the point load of the crossing vehicles.
- Same mats reused over multiple locations and applications.
- Reduced truck movements - 420 m² coverage per semi-trailer.
- Significant reduction in remediation time and costs compared to aggregate.
- Matting easily removable to allow resumption of traffic at night.



CASE STUDIES

Warrego Highway Upgrade Program Stage 1

Location : Warra, QLD

Client : Ostwald Bros

Coverage : 1,180 m²

Contract Value : \$60K

Scope :

- All-weather access
- Piling platform

JWA provided Dura-Base® Composite mats to assist the Upgrade Program for Warrego Highway, part of the nationally accredited Key Freight Route network.

Challenges:

- Piling program potentially affected by wet weather.

Benefits of Composite Matting:

- Single layer matting provides an additional 300mm either side of the track of load spreading.
- Reduce amount of crushed rock required for piling platform.
- Reduce time required to install multiple platforms.
- Reusable platforms - uninstalled and relaid across multiple piling sites.
- Weatherproofed site for uninterrupted site access.



SUSTAINABLE PRACTICES

At JWA, sustainability is a core priority that guides our operations. We embody the **Reduce, Reuse, Recycle** principles in everything we do. In our daily operations, we:

- Wash our mats after every job to maintain their pristine condition.
- Inspect and service our fleet after every job, which has enabled us to extend the lifespan of our mats by 5 years or more, from the manufacturer's stated 15 years to 20 years.



RECYCLING AND "END OF LIFE" PROGRAM

Our mats are 100% recyclable. When they reach the end of their life we clean them extensively to remove debris and other material that may contaminate the process, portion the mats small into pieces so that they can be accommodated by the recycling plant and then send them to a local plastics recycling centre.

We also introduced the "End Of Life" program for our clients who own their fleet and require assistance in responsible disposal of the mats that are no longer fit for purpose.

AUSTRALIAN MADE RECASTED PINS

Locking pins are vital for Dura-Base® installations as they prevent mat displacement.

As part of the "Pins Recasting" program, we remove the old, deteriorated plastic to salvage the steel shaft. We've collaborated closely with a local manufacturer to design pin molds and develop an improved quality resin mixture.

This program allows us to conserve valuable steel resources, while supporting Australian manufacturers and providing our customers with high quality locking pins.



SUSTAINABLE PRACTICES

We strive for continuous improvement of our facilities and embrace innovative, sustainable approaches. In our operations, we strictly adhere to the guidelines outlined in our sustainability policy and aim to exceed the required standards.



WATER TREATMENT

We recently overhauled our water treatment system at our headquarters, installing a PR Water unit to manage substantial volumes of contaminated water. The system uses flocculant chemicals to quickly sediment deposits. Through our collaboration with PR Water, we conducted tests to determine optimal chemical compositions for treating water from our bog mats, which return with diverse soil deposits. We took multiple water samples to a NATA Accredited Lab to ensure compliance with UnityWater discharge requirements.

POWERED BY RENEWABLE ENERGY

As part of our commitment to reducing the environmental footprint of our operations, we've almost fully transitioned our Brisbane facility to sustainable energy, harnessing Queensland's abundant sunshine. Our 80 solar panels (36kW), installed in 2021, has generated more than 50 MWh annually, reducing our grid consumption by two-thirds and supplying triple the amount of renewable energy back to the grid. Additionally, we utilise a battery unit to power our office appliances during night hours and have implemented various energy efficiency actions.



Other sustainable actions:

- We have conducted carbon accounting over the past 3 years, including calculating our scope 3 emissions, and are nearing our net zero goal for scope 1 and 2.
- We performed a yard audit for energy efficiency and implemented all recommended changes.
- We enhanced our sustainability policy to address work-related travel, ensuring all emissions from business travel are fully offset.
- We electrified operations where possible, including:
 - Switching to electric-powered high-pressure washers.
 - Using electric tools for servicing and mat repairs.
- We have introduced energy-saving measures, such as:
 - LED lighting replacements and motion sensor installations.
 - Building insulation upgrades for improved climate control and reduced energy consumption.
- We utilise a 30,000L rainwater tank for mat washing.
- We recycle and repurpose materials like steel and wood pallets, with our team creatively minimising waste by:
 - Building furniture from palletised wood.
 - Creating garden beds and veggie patches.
- We maintain a permaculture garden on our premises, growing fruit and vegetables for team's use.

ABOUT US

Established in 2003, JWA is wholly Australian-owned and operated, supplying projects nationwide from our purpose-built facility in Brisbane.

With beginnings in supporting oil and gas exploration projects, our specialised experience in providing temporary access, ground support and work platform solutions now assist infrastructure and construction projects all over Australia.

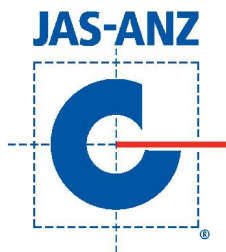
As the exclusive distributor of Dura-Base® Composite Matting for the Asia-Pacific region, we have over 170,000 m² deployed and over 50,000 m² available in Australia alone.

We are proud members of the Infrastructure Sustainability Council, and the International Erosion Control Association Australasia.

Our FODS Track-Out Control Matting received the Highly Commended Award in the 2020 IECA Australasia Environmental Excellence Awards, under the category of Excellence in Innovation, Contribution or Education to the Erosion and Sediment Control Industry.

Our products are part of ISC's iSupply directory and may contribute to projects aiming to fulfill credits in IS v1.2 Dis-4, IC-8, Mat-1, Was-1 & Was-2, and IS v2.1 Env-4, Inn-1, Rso-3, Rso-4, Rso-6.

JWA Composite Matting
ABN : 91 106 986 216



OUR STANDARDS

Safety, Environment, and Quality Management Systems

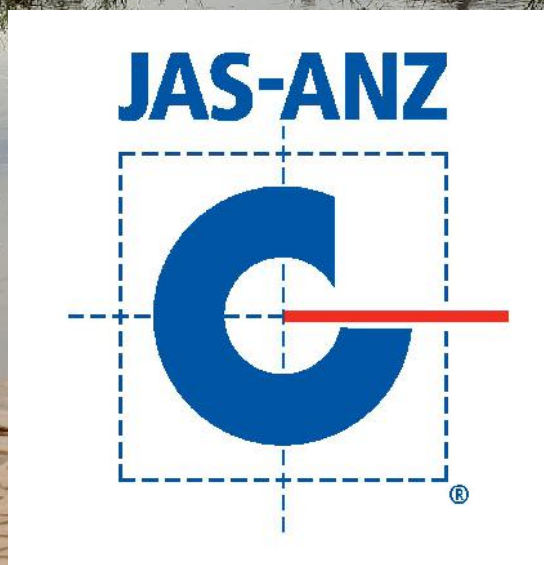
At JWA, safety, environmental responsibility, and quality are fundamental to how we operate. Guided by our **Health, Safety, Environment & Quality (HSEQ) Policy**, we are committed to eliminating hazards, minimising risks, and ensuring the well-being of all personnel while delivering solutions that exceed client expectations.

We take pride in having our operations certified to **ISO 45001:2018 (Occupational Health and Safety Management Systems)** and our facilities and business processes certified to **ISO 9001:2015 (Quality Management Systems)**. These certifications demonstrate our commitment to compliance, continuous improvement, and industry-leading standards.

Our team has a proven track record of delivering projects on highly regulated sites, maintaining strong controls around safety, quality, and environmental protection. Through our **Integrated HSEQ management system**, we aim to:

- Protect people and the environment by preventing harm, reducing waste, and using resources responsibly.
- Maximise efficiency by improving energy performance and minimising environmental impacts.
- Ensure compliance with all legal and regulatory obligations.
- Engage and support personnel through training, consultation, and feedback opportunities.
- Continuously improve our systems and performance through review, innovation, and collaboration with stakeholders.

This approach ensures that JWA consistently delivers safe, reliable, and sustainable solutions for our clients and communities.



OUR CLIENTS



CONTACT US

Our friendly team are here to help

Chat to us about your project scope today and find how our solutions can be applied to reduce the impact of the project on the environment while successfully meeting deadlines.

JWA Composite Matting

Head Office and Depot

35 Griffin Crescent
Brendale QLD 4500

P: 1800 264 628
1800 BOG MAT

E: enquiries@jwamats.com.au

W: www.jwamats.com.au



Follow us on
LinkedIn, to stay
tuned for the
updates

With an extensive network of transport operators and suppliers, we provide **nationwide coverage** across Australia and Oceania, delivering mats to our customers wherever they are.



NOTES



When you need to find a way

1800 264 628 | 1800 BOG MAT

www.jwamats.com.au